

MONTHLY MEMBERSHIP PROGRESS REPORT

LOCATION REP OF SRI LANKA

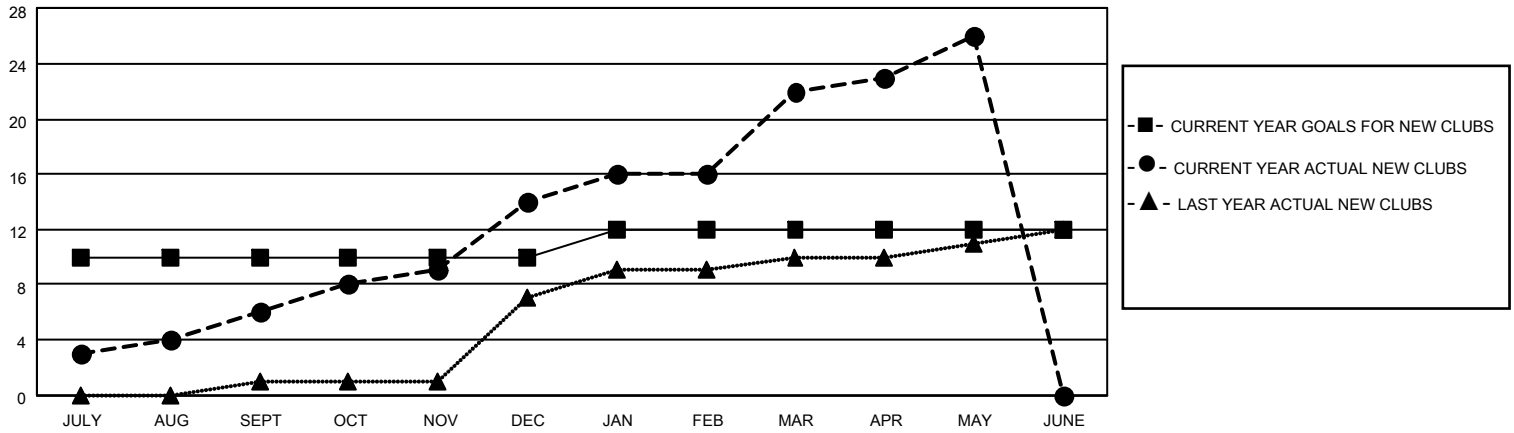
District 306 C1

Results as of: 5/31/2022

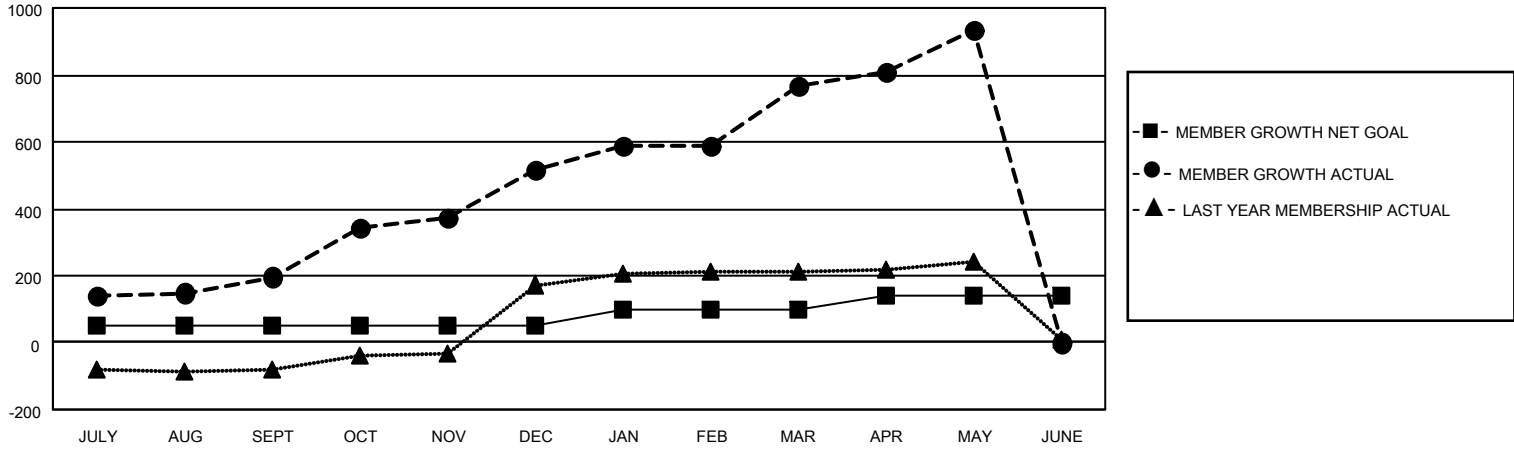
Clubs			
RESULTS FOR 2021-2022			
QUARTER	NEW CLUB GOAL	NEW CLUBS	DROPPED CLUBS
JULY/AUG/SEPT	10	6	1
OCT/NOV/DEC	0	8	0
JAN/FEB/MAR	2	8	0
APR/MAY/JUNE	0	4	0

Members			
RESULTS FOR 2021-2022			
QUARTER	MEMBER GROWTH NET GOAL	MEMBER GROWTH ACTUAL	DROPPED MEMBERS ACTUAL (including transfers)
JULY/AUG/SEPT	50	361	93
OCT/NOV/DEC	0	376	48
JAN/FEB/MAR	50	289	28
APR/MAY/JUNE	40	215	37

GOALS AND ACTUAL NEW CLUBS CUMULATIVE



GOALS AND ACTUAL MEMBERS CUMULATIVE



DROPPED CLUBS: 1

108 CLUBS OF 135 ADDED 1 OR MORE NEW MEMBERS

GENDER DISTRIBUTION

MALE	2,896 (74.56%)
FEMALE	987 (25.41%)
NON BINARY	0 (0.00%)
PREFER NOT TO ANSWER	1 (0.03%)

DROPPED MEMBERS

DECEASED	9
CLUB CANCELLED	52
OTHER	145
TOTAL	206

[CLICK HERE FOR CUMULATIVE MEMBERSHIP DATA](#)

TOTAL FAMILY UNIT MEMBERS 1,209

FAMILY MEMBERS PAYING HALF DUES 702